

**REGIOLUX**  
Made in Germany



## parsa LED

Light for challenging environments





# parsa

A damp-proof luminaire has to be one thing above all – tough. parsa has been developed with exactly this in mind. It goes without saying that the luminaire is well prepared for mechanical loads and quick and easy to install thanks to its well-

thought-out design. The fact that there have been no compromises as far as the light engine is concerned is illustrated by the outstanding service life data. Altogether, a real all-round product.

A++ CE IP65

PSO IK04; Ta: ± 0°C – +25°C

PSOPC IK06; Ta: -20°C – +35°C

**Mounting:**

- Ceiling surface
- Mounting rail
- Suspended

**Housing:**

- Made of glass fibre reinforced polyester, stainless steel diffuser clips, device mount made of sheet steel painted white

**Lighting technology PSO:**

- Diffuser, opal; PMMA plastic
- Lighting characteristic direct distribution

**Lighting technology PSOPC:**

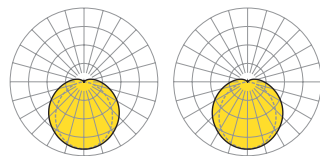
- Diffuser, opal; PC plastic
- Lighting characteristic direct distribution

**Lamp:**

- LED 50000h L80/B10
- CRI ≥ 80 / 4000K

**Switching:**

- 1 Control gear
- Electronic driver
- 230V 50Hz



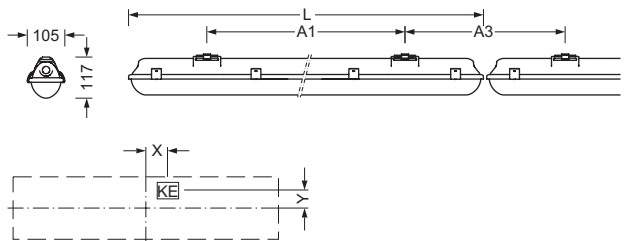
PSO/1500 LED 9800 lm 840	PSO/1200 LED 4500 lm 840
$\eta_{LB}$ 100% lm/W 145	$\eta_{LB}$ 100% lm/W 143
direct/indirect 91/9%	direct/indirect 91/9%
UGR lat./long. 26,4/23,7	UGR lat./long. 24,4/21,7



The LED unit can be unclipped without tools to connect the luminaire.

**Dimensions**

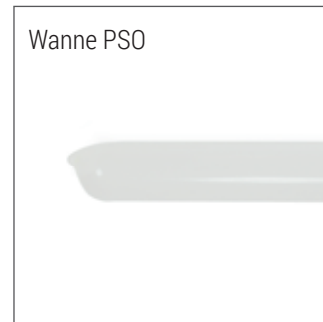
Type	Versions	LxBxH/DxH	A1	A3	KE X/Y
PSO./1200	LED	1300 x 105 x 117	800	505	650 / 0
PSO. /1500	LED	1600 x 105 x 117	1000	605	800 / 0
PSO/1200	LED	1300 x 105 x 117	800	505	650 / 0
PSO/1500	LED	1600 x 105 x 117	1000	605	800 / 0



**Products**

Type	Lamps	P <sub>sys</sub> [W]	Colour	Ballast	LxBxH/DxH	Item number	kg
<i>Diffuser, opal direct distribution</i>							
parsa-PSO/1200	LED 4500lm 840	31	hg	ED	1300 x 105 x 117	5661 2024 110	2,00
				DALI	1300 x 105 x 117	5661 2026 610	2,02
parsa-PSO/1500	LED 5800lm 840	41	hg	ED	1600 x 105 x 117	5661 5024 110	2,42
				DALI	1600 x 105 x 117	5661 5026 610	2,45
	LED 9800lm 840	68	hg	ED	1600 x 105 x 117	5661 5034 110	2,60
				DALI	1600 x 105 x 117	5661 5036 610	2,60
parsa-PSOPC/1200	LED 3900lm 840	31	hg	ED	1300 x 105 x 117	5661 2024 170	2,00
				DALI	1300 x 105 x 117	5661 2026 670	2,00
parsa-PSOPC/1500	LED 5100lm 840	41	hg	ED	1600 x 105 x 117	5661 5024 170	2,42
				DALI	1600 x 105 x 117	5661 5026 670	2,42
	LED 8600lm 840	68	hg	ED	1600 x 105 x 117	5661 5034 170	2,60
				DALI	1600 x 105 x 117	5661 5036 670	2,60

# Mounting accessories



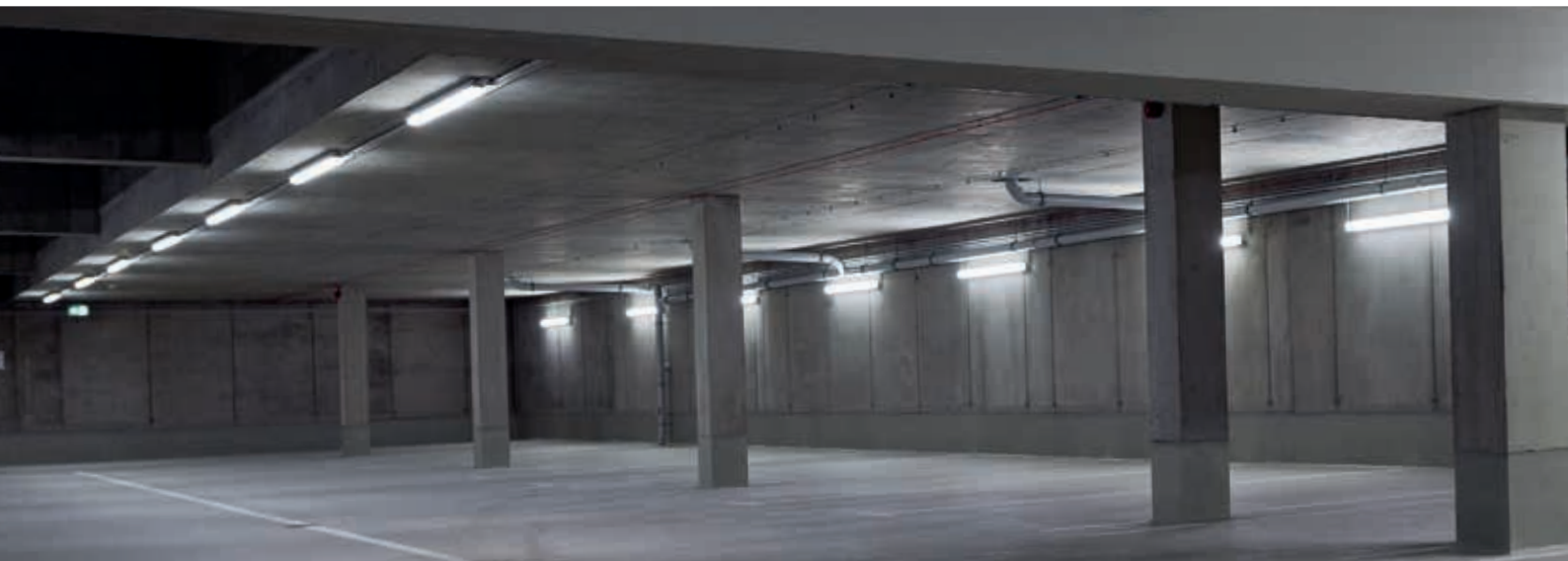
## Accessories

	Type	Colour	Material	Details	Item number		
<i>Electrical technology</i>							
Through-wiring cable	PS-DV 1200	ws	H05VV-F	5x1.5mm <sup>2</sup> for PSO	5661 9200 100	1	0,17
	PS-DV 1500	ws	H05VV-F	5x1.5mm <sup>2</sup> for PSO	5661 9500 100	1	0,21
<i>Protection</i>							
Protective wire cage	DKF 1200	gecr	St.galv.	for parsA PS LED;	5976 1360 100	1	1,23
	DKF 1500	gecr	St.galv.	for parsA PC LED;	5976 1580 100	1	1,54
Protective cage mounting	DKF -HB	vw	St.galv.	Retaining bracket for DKF	5976 1000 100	2	0,10
<i>Mounting</i>							
Chain suspension	PS-AHK	me	St	PS suspension kit for chain/cable	5661 9001 100	1	0,01
Mounting clip	PS-AHS	me	Inox	for PS to SDT rail	5661 9002 100	1	0,03

## Replacement parts

	Type	Colour	Material	Details	Item number		
<i>Lighting technology</i>							
Diffuser	Wanne PSO/1200	tz	PMMA	for PSO/1200 LED	5661 2000 110	1	0,28
	Wanne PSO/1500	tz	PMMA	for PSO/1500 LED	5661 5000 110	1	0,34
	Wanne PSOPC/1200	tz	PC	for PSOPC/1200 LED	5661 2000 170	1	0,28
	Wanne PSOPC/1500	tz	PC	for PSOPC/1500 LED	5661 5000 170	1	0,34

Photo index Page 1 Lammeyer · iStock / Jag\_cz · fotolia  
2 Aleksandar Georgiev · iStock  
3 Frank Freihofer · Kitzingen DE



Regiolux GmbH



**REGIOLUX**  
Made in Germany

Regiolux GmbH  
Hellinger Straße 3  
D 97486 Königsberg  
T +49 9525 89 0  
F +49 9525 89 7  
info@regiolux.de  
www.regiolux.de