

**REGIOLUX**  
Made in Germany



A CLASSIC PRODUCT SET IN VALUE

Diffuser luminaire KLKF LED



## LED power packages – compact and wonderful homogeneous



### Mounting:

- Ceiling surface
- Wall mounting
- Mounting rail
- Suspended

### Housing:

- Sheet steel

### Lighting technology KLKF:

- Diffuser, opal; PMMA plastic
- Lighting characteristic direct/indirect distribution

### Lamp:

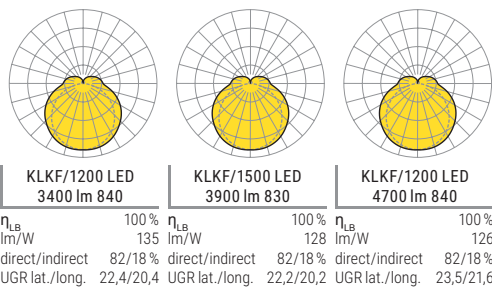
- LED 50000h L80/B10
- CRI ≥ 80 / 4000K or CRI ≥ 80 / 3000K

### Switching:

- 1 Control gear
- Electronic driver + DALI
- 230V 50Hz

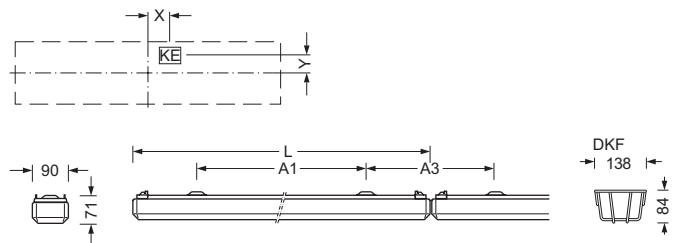
### Mounting instructions:

- IP40 for mounting rail and suspended mounting
- Mounting rail and suspended mounting only with accessories



### Dimensions

Type	Versions	LxBxH/DxH	A1	A3	KE X/Y
KL./0600	LED	615 x 90 x 71	490	130	160 / 0
KL./1200	LED	1215 x 90 x 71	900	320	40 / 0
KL./1500	LED	1515 x 90 x 71	1100	420	30 / 0





### Products

Type	Lamps	P <sub>sys</sub> [W]	Colour	Ballast	LxBxH/DxH	Item number	kg
<i>Diffuser, opal direct/indirect distribution</i>							
KLKF/0600	LED 2300lm 830	20	vw	ED	615 x 90 x 71	2110 0624 120	1,55
	LED 2500lm 840	20	vw	ED	615 x 90 x 71	2110 0614 120	1,55
KLKF/1200	LED 3200lm 830	25	vw	ED	1215 x 90 x 71	2110 1224 120	2,10
				DALI	1215 x 90 x 71	2110 1226 620	2,10
	LED 3400lm 840	25	vw	ED	1215 x 90 x 71	2110 1214 120	2,10
				DALI	1215 x 90 x 71	2110 1216 620	2,10
	LED 4500lm 830	37	vw	ED	1215 x 90 x 71	2110 0224 120	2,10
				DALI	1215 x 90 x 71	2110 0226 620	1,85
LED 4700lm 840	37	vw	ED	1215 x 90 x 71	2110 0214 120	2,10	
			DALI	1215 x 90 x 71	2110 0216 620	2,10	
KLKF/1500	LED 3900lm 830	31	vw	ED	1515 x 90 x 71	2110 1524 120	2,60
				DALI	1515 x 90 x 71	2110 1526 620	2,60
	LED 4200lm 840	31	vw	ED	1515 x 90 x 71	2110 1514 120	2,60
				DALI	1515 x 90 x 71	2110 1516 620	2,60
	LED 5600lm 830	47	vw	ED	1515 x 90 x 71	2110 0524 120	2,60
DALI				1515 x 90 x 71	2110 0526 620	2,30	
LED 5900lm 840	47	vw	ED	1515 x 90 x 71	2110 0514 120	2,60	
			DALI	1515 x 90 x 71	2110 0516 620	2,30	



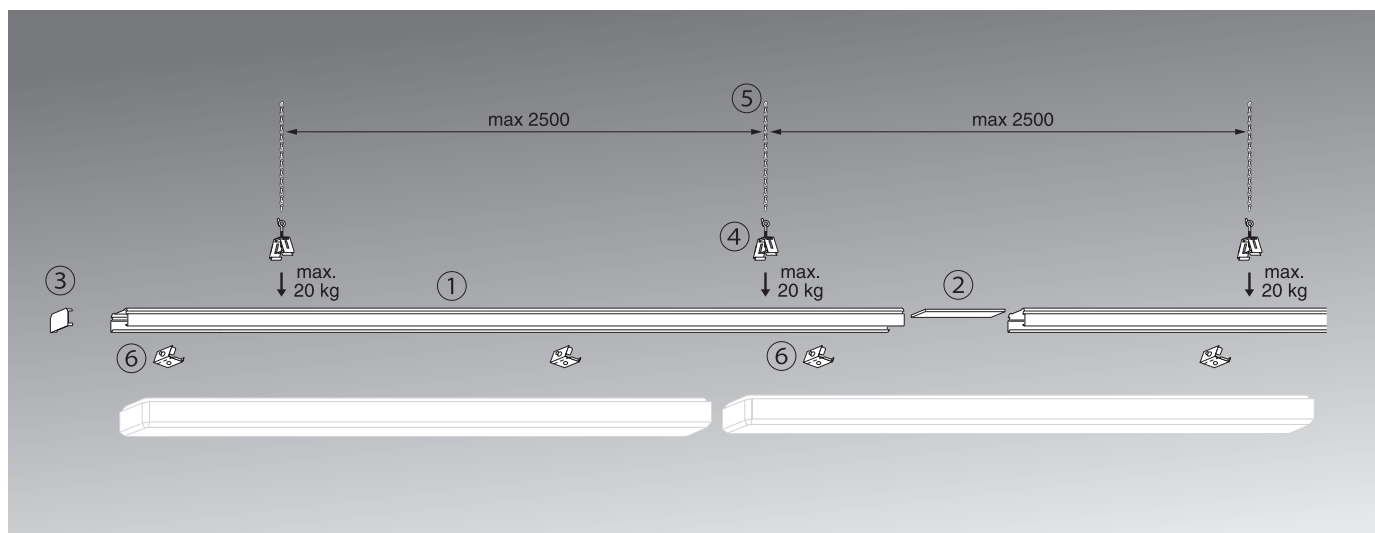
## Accessories and replacement parts

Type	Colour	Material	Details	Item number			
<i>Protection</i>							
Protective wire cage	DKF 0600	gecr	St.galv.	for PA T5 1x14/24, T8 1x18, KLKF-LED	5976 1180 100	1	0,72
	DKF 1200	gecr	St.galv.	for parsas PS LED; PU, PUPC T5 1x28/54, 2x28/54; PA, PC, T5 1x28/54 T8 1x36, KLKF LED, KL.T5	5976 1360 100	1	1,23
	DKF 1500	gecr	St.galv.	for parsas PS LED; PU, PUPC T5 1x28/54, 2x28/54; PA, PC, T5 1x28/54 T8 1x36, KLKF LED, KL.T5	5976 1580 100	1	1,54
Protective cage mounting	DKF -HBK	vw	St.galv.	Retaining bracket for DKF	5976 1100 100	2	0,10
<i>Lighting technology</i>							
Diffuser	KLKF LED 0600	tz	PMMA	for KLKF 0600 LED	2110 9600 120	1	0,20
	KLKF LED 1200	tz	PMMA	for KLKF 1200 LED	2110 9200 120	1	0,38
	KLKF LED 1500	tz	PMMA	for KLKF 1500 LED	2110 9500 120	1	0,41
<i>Mounting</i>							
Chain suspension	KAH	ws	PA	M6 for PFL, ILG, KLKF LED	5910 2000 100	2	0,10

Please refer to the current data for LED luminaires under [www.regiolum.de](http://www.regiolum.de)

\*For information about the manufacturer's guarantee for LED luminaires, see [http://www.regiolum.de/fi/leadadmin/REGIOLUX/Service/Garantie/Warranty\\_LED\\_en.pdf](http://www.regiolum.de/fi/leadadmin/REGIOLUX/Service/Garantie/Warranty_LED_en.pdf)

# Accessories for mounting rail installation



- ① SDT basic unwired mounting rail
- ② SDTSV mounting rail connector
- ③ SDTE mounting rail protective cover (end face)
- ④ Mounting rail fixing / suspension SDH/SDD/SDCT/SDRP/SDT-ZA/SDT-AP
- ⑤ Suspension (tube / chain)
- ⑥ Luminaire fixing SDLA

## Accessories

	Type	Colour	Material	Details	Item number		
<i>Design</i>							
Section cover	SDBAV 1500	vw	St	l=7x219=1533mm for SDT Basic	1884 5580 101	1	0,85
	SDBK 1500	vw	PVC	for SDT 1500, ATS	1883 7580 100	1	0,24
<i>Protection</i>							
Protective cover IP20	SDTE	vw	PC	for SDT, ATS	1890 0231 100	2	0,02
<i>Mounting</i>							
Single wire suspension	SDCS	ws	Inox+mix	l=2000mm for SDT	1890 0034 100	1	0,07
	SDCSE	ws	Inox+mix	Canopy D=123mm, rope D=1.5mm, L=2200mm, 3x1.5mm <sup>2</sup> for SDT	1890 0044 100	1	0,30
Chain suspension	KK	me	St	Chain l=30m, for SDT, SDT Basic, ATS, suspended luminaires	9282 9300 100	1	4,60
	KP 80	me	St+PC	l=800mm for suspended luminaires	9282 9080 100	1	0,27
	SDH	me	Inox	for SDT, ATS at chain	1890 0039 100	1	0,04
	SDT -AP	me	St	for SDT	1890 0022 100	1	0,93
	SDT -ZA	me	St	for SDT	6820 9300 110	1	0,20
Tubular pendant suspension	RP 50	ws	St+PC	d=16mm, M13, l=500mm for suspended luminaires	9280 9050 100	1	0,25
	RP 80	ws	St+PC	d=16mm, M13, l=800mm for suspended luminaires	9280 9080 100	1	0,33
	RP 100	ws	St+PC	d=16mm, M13, l=1000mm for suspended luminaires	9280 9100 100	1	0,40
	SDRP	me	Inox+mix	for SDT at tubular pendant RP	1890 0054 100	1	0,02
Mounting clip	SDCT	me	Inox	for SDT at visible T-rail	1890 0042 100	1	0,03
	SDD	me	Inox	for SDT at ceiling	1890 0033 100	1	0,01
<i>Structure</i>							
Luminaires fixing	SDLA	me	St.galv.	for SDT Basic	1890 0058 100	1	0,03
Mounting rail	SDT Basic 1500/II	vw	St.galv.	l=3070mm 2.6kg for surface-mounted luminaires	1825 2580 150	1	2,60
	SDT Basic 1500/III	vw	St.galv.	l=4605mm 3.9kg for surface-mounted luminaires	1825 3580 150	1	3,90
Mounting rail connector	SDTSV	me	St.galv.	for SDT...Basic, ATS	1890 0092 100	1	0,30

## Photo index

Regiolux



**REGIOLUX**  
Made in Germany

Regiolux GmbH  
Hellinger Straße 3  
D 97486 Königsberg  
T +49 9525 89 0  
F +49 9525 89 7  
info@regiolux.de  
www.regiolux.de