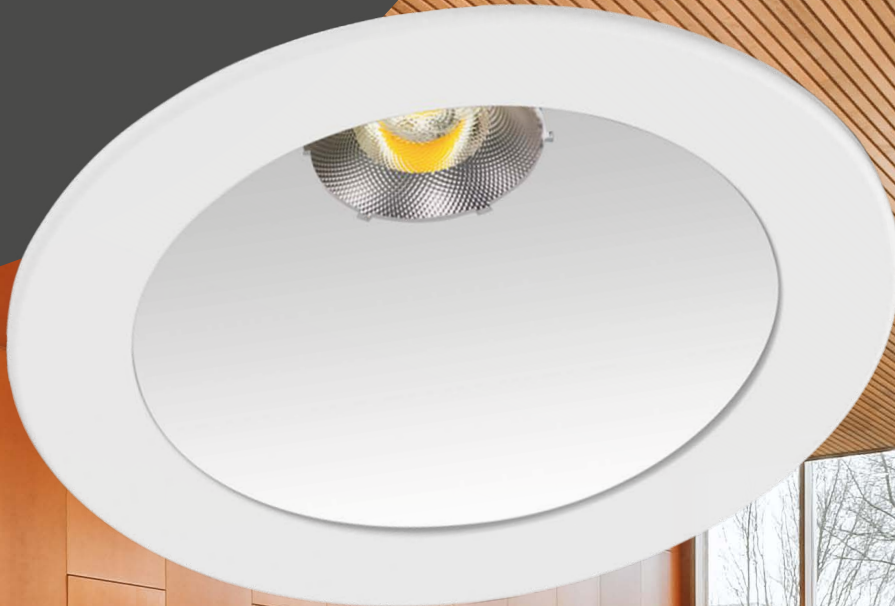


# changy

Downlights

Time for changy!

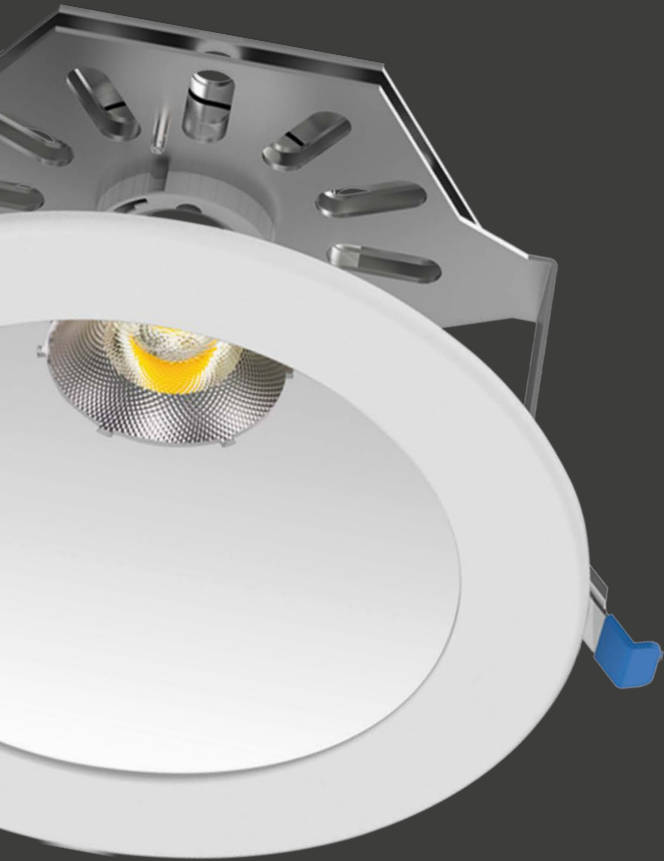


# IN A MOOD FOR CHANGE

Regiolux is working on many levels to reduce the impact on the environment. When it comes to the main topic of energy efficiency, the *changy* LED luminaire follows our high standards. The optimisation of lighting techniques – as our new single lens/Tri-Zone lens shows – is not the end of the evolution. The phasing out of fluorescent lamps and requirements for refurbishment are currently adding further momentum. For the refurbishment of downlights, *changy* offers different options to suit your concept. It's time to for changy.

TIME FOR  
HANGY

— — —  
Made in Germany



## Effective thermal management

Requirement for a service life of 100,000 h

## Spring clip lock

Fast, reliable and tool-free locking of the *changy* downlight, at the designated ceiling position.

## Single lens/TriZone lens

Lens technology adapted from LEDiL (YASMEEN lens) for excellent illumination performance. Requirements for computer workstations are fulfilled.

## Reflector

Without dazzling reflections, the design of the reflector emphasises the downlight's contemporary adaptability to the ceiling.

## Installation data

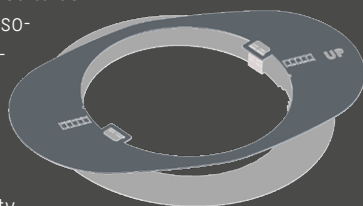
\*Ceiling cut-out: 230–300 mm

Installation depth (recommended): 165 mm

Ceiling thickness (min.–max.): 10–25 mm

## Refurbishment\* made easy

Are there any downlights that need to be replaced? ? With the right accessories these are not empty promises. The refurbishment ring is the quick solution: reinforcement insert and cladding at the same time. This allows refurbishment without third-party works.



Refurbishment ring

## Halo lighting effect – the accent

A concealed diffuser ring provides the IP40 types with a special lighting effect.



Halo lighting effect

# Refurbishment with added value

Taking purposeful  
advantage of outstanding  
lighting technology



- Refurbishment without third-party works
- Long service life, more efficiency
- Rapid refurbishment without long downtimes and shutdowns
- ETM + DALI – flicker-free (according to the Ecodesign Directive)
- Mercury-free thanks to LED
- No fading thanks to UV-free light
- Any round downlights are exchangeable

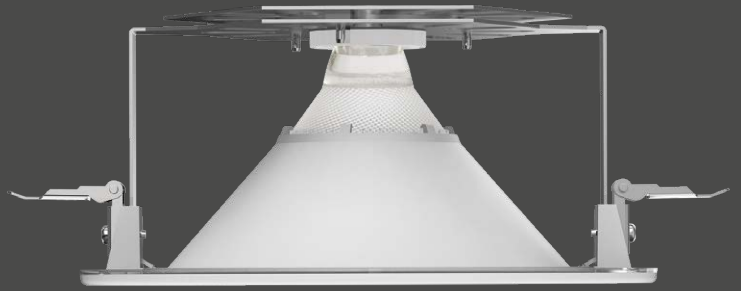
## Translation changy

Lamps	Wattage	Lamp luminous flux	changy Comparison type		
TC-T/EL – TC-D/EL	1x18 W	1200 lm	changy-B	1500–2500	840 ETM vw
TC-T/EL – TC-D/EL	1x26 W	1800 lm	changy-B	1500–2500	840 ETM vw
TC-T/EL – TC-D/EL	1x32 W	2400 lm	changy-B	1500–2500	840 ETM vw
TC-T/EL – TC-D/EL	1x42 W	3200 lm	changy-B	2500–3300	840 ETM vw
TC-T/EL – TC-D/EL	2x13 W	1800 lm	changy-B	1500–2500	840 ETM vw
TC-T/EL – TC-D/EL	2x18 W	2400 lm	changy-B	1500–2500	840 ETM vw
TC-T/EL – TC-D/EL	2x26 W	3600 lm	changy-B	2500–3300	840 ETM vw
TC-T/EL – TC-D/EL	2x32 W	4800 lm	changy-B	3800–4700	840 ETM vw
TC-T/EL – TC-D/EL	2x42 W	6400 lm	changy-B	3800–4700	840 ETM vw

## TriZone lens: *LEDiL YASMEEN lens*



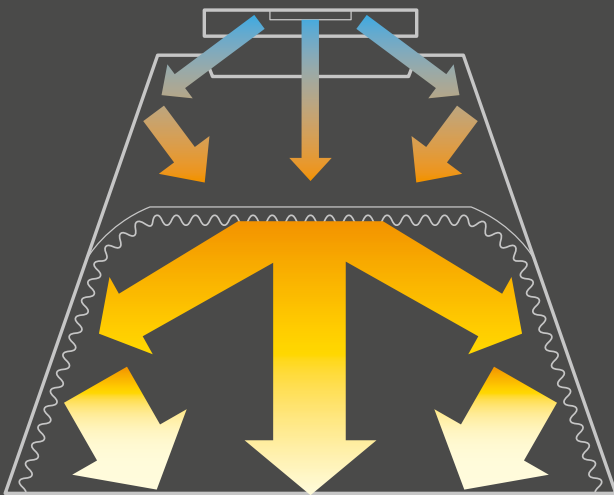
©2023 LEDiL



## Innovation and cooperation

LEDiL's YASMEEN lens ensures excellent and extremely homogeneous illumination. The light passes through the 3 functional zones of the lens, resulting in a mixed, perfect lighting result.

## Single lens/TriZone lens



### Zone 1: Light control

Refractive light injection and total internal reflection technology (TIR) shape the light distribution.

### Zone 2: Mixing zone

Micro-structuring of the first outcoupling surface as a pillow-optic structure ensures perfect mixing of light and colour.

### Zone 3: Fine tuning

TIR and pillow optics work together to fine-tune the luminous intensity distribution curve with smooth transitions and perfect uniformity.

## Lighting technology description

- Direct wide-beam or direct narrow/wide-beam light distribution via single lens/TriZone equipped with LEDiL's YASMEEN lens and diffuser ring for Nimbus light effect
- for computer workstations
- Omnidirectional glare reduction according to current standard DIN-EN 12464-1

# Refurbishment with changy LED

Hallways and corridors

## Refurbishment of hallways and corridors

	EXISTING LUMINAIRES	OPTION 1	OPTION 2
	Any downlight	1:1 exchange	Redesign + light management
<b>Luminaire type</b>	doma DESD/195 TC-DEL 2/18 W EVG	changy-B 2500-1500 840 ETM	
		ETM 1500 lm	ETM 2300 lm
<b>Number of luminaires</b>		6 (1:1 exchange)	4 (New incl. light management)
<b>Average illuminance</b>	148 lx	158 lx	169 lx
<b>Homogeneity</b>	0.70	0.73	0.85
<b>Savings</b>		72%	80%
<b>General information:</b> Room height: 2.80 m Reflectance factor: 70/50/20 Maintenance factor: 0.8			



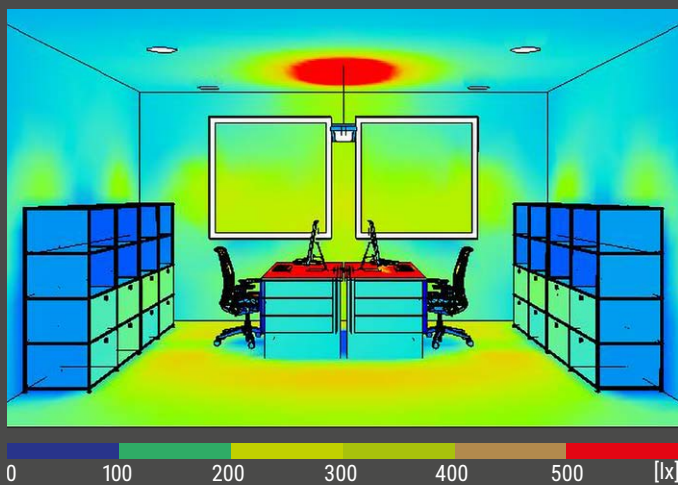
Office



Foyer

# Refurbishment of computer workstations

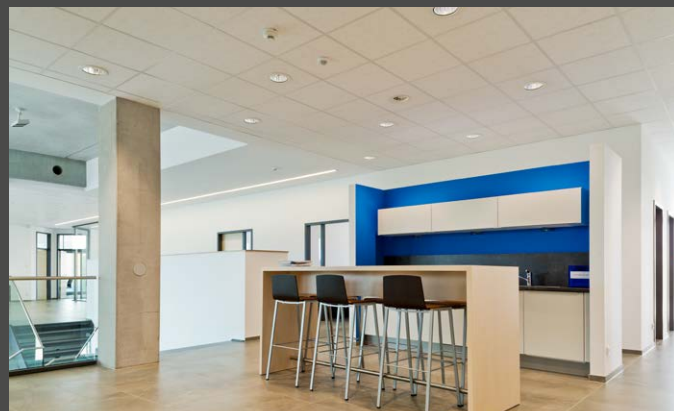
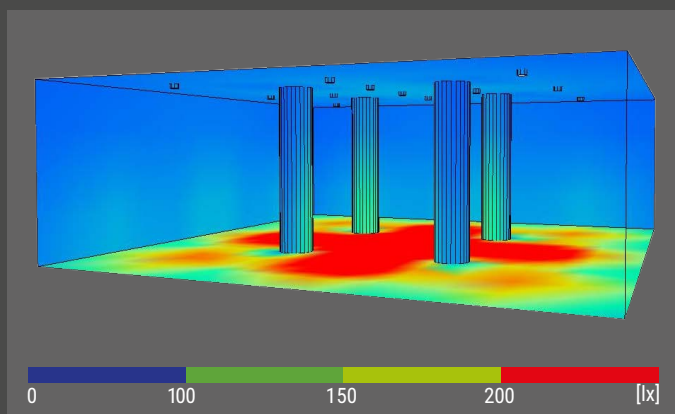
1:1 exchange of downlights in the basic illumination VDU-compliant



<b>Luminaire type</b>	<b>Any downlight</b> Downlight with TC-DEL 2/26 W ECG	<b>changy-B 2500-1500 840</b> ETM 1900 lm	<b>General information:</b> Room height: 2,80 m Reflectance factor: 70/50/20 Maintenance factor: 0,8
<b>Number of luminaires</b>	4	4	
<b>Average illuminance</b>	>300 lx	>300 lx	
<b>Savings</b>		<b>74%</b>	

# Refurbishment in the lobby

VDU-compliant, bright downlights



<b>Luminaire type</b>	<b>Any downlight</b> e.g. doma DESD/285 TC-TEL 2/42 W ECG	<b>changy-TB 4200-3400 840</b> ETM 4200 lm
<b>Number of luminaires</b>	17	13
<b>Average illuminance</b>	192 lx	209 lx
<b>Homogeneity</b>	0.50	0.50
<b>Savings</b>		65%

**General information:**  
Room height: 5 m  
Reflectance factor: 70/50/20  
Maintenance factor: 0.8

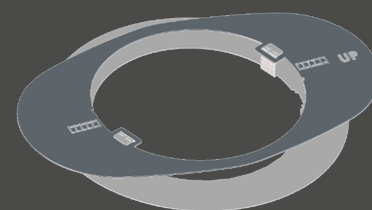
## changy

Installation video



### Quick to show

The refurbishment ring makes mounting easy with no tools needed.



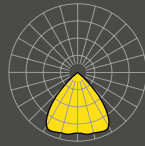
*Refurbishment ring – perfectly concealing ceiling cut-outs of Ø 230-300 mm with accessories.*



Product family <i>changy</i>	<b>changy-B 85°</b>	<b>changy-TB 65°</b>	<b>changy-B 85°</b>
	IP40	IP40	IP54
<b>Lighting technology</b>	Single lens/TriZone	Single lens/TriZone	Single lens/TriZone
<b>Light distribution</b>	direct wide distribution	direct narrow/wide distribution	direct wide distribution
<b>Luminous intensity distribution curve</b>			
<b>Luminaire luminous flux</b>	1400-4700 lm	1200-4200 lm	1300-4300 lm
<b>CCT</b>	3000K 4000K	3000K 4000K	3000K 4000K
<b>Luminaire luminous flux ETM</b>	<ul style="list-style-type: none"> <li>2300-1400 lm <input checked="" type="checkbox"/></li> <li>2500-1500 lm <input type="checkbox"/></li> <li>3000-2300 lm <input checked="" type="checkbox"/></li> <li>3300-2500 lm <input type="checkbox"/></li> <li>4400-3500 lm <input checked="" type="checkbox"/></li> <li>4700-3800 lm <input type="checkbox"/></li> </ul>	<ul style="list-style-type: none"> <li>2100-1200 lm <input checked="" type="checkbox"/></li> <li>2200-1300 lm <input type="checkbox"/></li> <li>2700-2100 lm <input checked="" type="checkbox"/></li> <li>2900-2200 lm <input type="checkbox"/></li> <li>3900-3100 lm <input checked="" type="checkbox"/></li> <li>4200-3400 lm <input type="checkbox"/></li> </ul>	<ul style="list-style-type: none"> <li>2100-1300 lm <input checked="" type="checkbox"/></li> <li>2300-1300 lm <input type="checkbox"/></li> <li>2800-2100 lm <input checked="" type="checkbox"/></li> <li>3000-2300 lm <input type="checkbox"/></li> <li>4000-3300 lm <input checked="" type="checkbox"/></li> <li>4300-3500 lm <input type="checkbox"/></li> </ul>
<b>Luminaire efficiency</b>	141-102 lm/W	126-100 lm/W	130-94 lm/W
<b>Colour rendering</b>	≥80 CRI	≥80 CRI	≥80 CRI
<b>UGR</b>	UGR16 BAP	UGR10 BAP	UGR21
<b>Service life</b>	L80 B10 100.000h	L80 B10 100.000h	L80 B10 100.000h L90 B50 50.000h
<b>Ballast</b>	DALI2, EDM	DALI2, EDM	DALI2, EDM
<b>Dimensions</b>	D 246 mm H 117 / 128 mm	D 246 mm H 117 / 128 mm	D 246 mm H 117 / 128 mm
<b>Ceiling cut-out</b>	229 mm	229 mm	229 mm
<b>Installation depth* (Recommendation)</b>	165mm	165mm	165mm

\*Ceiling thickness (DS max.-min.): 10-25 mm

## Single lens/TriZone 85° direct wide distribution



UGR ≤ 19

IP 40

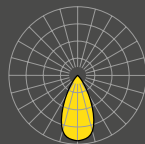


100000h L80/B10 – 50000h L90/B50

Type	Lamps	Colour	Ballast	DxH	Art. no.	lm/W	P <sub>sys</sub> [W]	kg
changy-B 830	LED 2300-1400 830	vw RAL 9016	EDM	246 x 117	3651 0084 110	132-121	10-19	1,18
	LED 3000 830	ws RAL 9016	DALI2 <sup>1)</sup>	246 x 117	3651 0026 610	112	27	1,26
	LED 3000-2300 830	ws RAL 9016	EDM	246 x 117	3651 0104 110	121-112	19-27	1,18
	LED 3900 830	ws RAL 9016	DALI2 <sup>1)</sup>	246 x 128	3651 0046 610	103	38	1,72
	LED 4400-3500 830	ws RAL 9016	EDM	246 x 128	3651 0064 110	111-102	32-43	1,70
	LED 4400 830	ws RAL 9016	DALI2 <sup>1)</sup>	246 x 128	3651 0066 610	102	43	1,72
changy-B 840	LED 2500-1500 840	ws RAL 9016	ETM	246 x 117	3651 0074 110	141-130	10-19	1,18
	LED 3300 840	ws RAL 9016	DALI2 <sup>1)</sup>	246 x 117	3651 0016 610	120	27	1,26
	LED 3300-2500 840	ws RAL 9016	EDM	246 x 117	3651 0094 110	130-120	19-27	1,18
	LED 4200 840	ws RAL 9016	DALI2 <sup>1)</sup>	246 x 128	3651 0036 610	110	38	1,72
	LED 4700-3800 840	ws RAL 9016	EDM	246 x 128	3651 0054 110	119-110	32-43	1,70
	LED 4700 840	ws RAL 9016	DALI2 <sup>1)</sup>	246 x 128	3651 0056 610	110	43	1,72

<sup>1)</sup>Luminaires suitable for IoT (Internet of Things):

## Single lens/TriZone 60° direct narrow/wide distribution



UGR ≤ 16

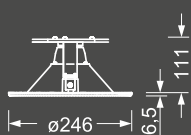
IP 40



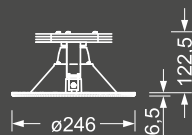
100000h L80/B10 – 50000h L90/B50

Type	Lamps	Colour	Ballast	DxH	Art. no.	lm/W	P <sub>sys</sub> [W]	kg
changy-TB 830	LED 2100-1200 830	ws RAL 9016	EDM	246 x 117	3651 0084 120	117-108	10-19	1,18
	LED 2700 830	ws RAL 9016	DALI2 <sup>1)</sup>	246 x 117	3651 0026 620	100	27	1,26
	LED 2700-2100 830	ws RAL 9016	EDM	246 x 117	3651 0104 120	108-100	19-27	1,18
	LED 3500 830	ws RAL 9016	DALI2 <sup>1)</sup>	246 x 128	3651 0046 620	92	38	1,72
	LED 3900-3100 830	ws RAL 9016	EDM	246 x 128	3651 0064 120	99-91	32-43	1,70
	LED 3900 830	vw RAL 9016	DALI2 <sup>1)</sup>	246 x 128,5	3651 0066 620	91	43	1,72
changy-TB 840	LED 2200-1300 840	ws RAL 9016	EDM	246 x 117	3651 0074 120	126-116	10-19	1,18
	LED 2900 840	ws RAL 9016	DALI2 <sup>1)</sup>	246 x 117	3651 0016 620	107	27	1,26
	LED 2900-2200 840	ws RAL 9016	EDM	246 x 117	3651 0094 120	116-107	19-27	1,18
	LED 3700 840	ws RAL 9016	DALI2 <sup>1)</sup>	246 x 128	3651 0036 620	98	38	1,72
	LED 4200-3400 840	ws RAL 9016	EDM	246 x 128	3651 0054 120	106-98	32-43	1,70
	LED 4200 840	vw RAL 9016	DALI2 <sup>1)</sup>	246 x 128,5	3651 0056 620	98	43	1,72

<sup>1)</sup>Luminaires suitable for IoT (Internet of Things):

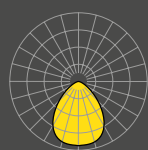


LED 1200 – 3300 lm



LED 3500 – 4700 lm

## Single lens/TriZone 85° direct wide distribution



UGR ≤ 25

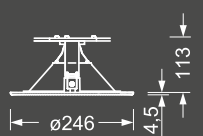
IP 54



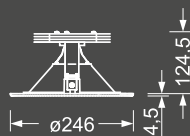
100000h L80/B10 – 50000h L90/B50

Type	Lamps	Colour	Ballast	DxH	Art. no.	lm/W	P <sub>sys</sub> [W]	kg
changy-B 830 IP54	LED 2100-1300 830	ws RAL 9016	EDM	246 x 117	3651 1084 110	122-112	10-19	1,38
	LED 2800 830	ws RAL 9016	DALI2 <sup>1)</sup>	246 x 117	3651 1026 610	103	27	1,46
	LED 2800-2100 830	ws RAL 9016	EDM	246 x 117	3651 1104 110	112-103	19-27	1,38
	LED 3600 830	ws RAL 9016	DALI2 <sup>1)</sup>	246 x 128	3651 1046 610	95	38	1,92
	LED 4000-3300 830	ws RAL 9016	EDM	246 x 128	3651 1064 110	103-94	32-43	1,90
	LED 4000 830	ws RAL 9016	DALI2 <sup>1)</sup>	246 x 128	3651 1066 610	94	43	1,92
changy-B 840 IP54	LED 2300-1300 840	ws RAL 9016	EDM	246 x 117	3651 1074 110	130-120	10-19	1,38
	LED 3000 840	ws RAL 9016	DALI2 <sup>1)</sup>	246 x 117	3651 1016 610	111	27	1,46
	LED 3000-2300 840	ws RAL 9016	EDM	246 x 117	3651 1094 110	120-111	19-27	1,38
	LED 3900 840	ws RAL 9016	DALI2 <sup>1)</sup>	246 x 128	3651 1036 610	102	38	1,92
	LED 4300-3500 840	ws RAL 9016	EDM	246 x 128	3651 1054 110	110-101	32-43	1,90
	LED 4300 840	ws RAL 9016	DALI2 <sup>1)</sup>	246 x 128	3651 1056 610	101	43	1,92

<sup>1)</sup>Luminaires suitable for IoT (Internet of Things):



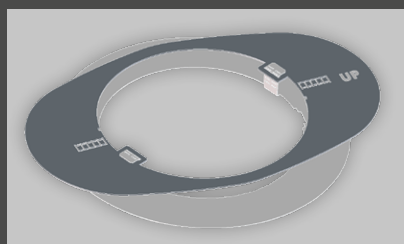
LED 1300 – 3000 lm



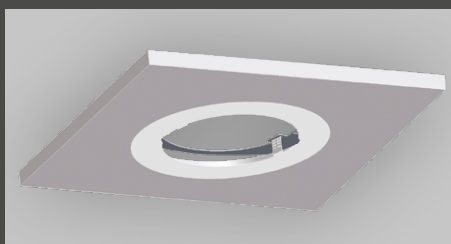
LED 3600 – 4300 lm

## Mounting accessories

Type	Colour	Material	Details	Art. no.	kg	
Refurbishment ring	changy-SR	vw RAL 9016	St	Refurbishment ring for veneering larger cut-outs	3651 9000 100	1



Refurbishment ring



Mounting situation

Switch to excellent lighting technology.

Detailed and current data can be found under [www.regiolux.de/en](http://www.regiolux.de/en)

## Refurbishing with know-how

Planning, testing and coordinating is always that little bit easier with an experienced project partner by your side. Upgrade your facility to perfection with Regiolux. The fast way to a new light solution: our services for your lighting update.



### Image index

- 1 Procreators, shutterstock.com
- 2 Basileus, shutterstock.com
- 4 Wellnhofer Designs, stock.adobe.com
- 5 LEDiL
- 6 Michael Moser, Leipzig DE
- 7-8 Jana Wenderoth, Kassel DE
- 9 Frank Freihofer, Kitzingen DE

**Green  
Update**

PDF 



[www.regiolux.de/en/changy](http://www.regiolux.de/en/changy)

**REGIOLUX**

Regiolux GmbH  
Hellinger Straße 3  
D 97486 Königsberg  
T +49 9525 89 0  
[info@regiolux.de](mailto:info@regiolux.de)  
[www.regiolux.de/en](http://www.regiolux.de/en)

Regiolux @ Social Media

